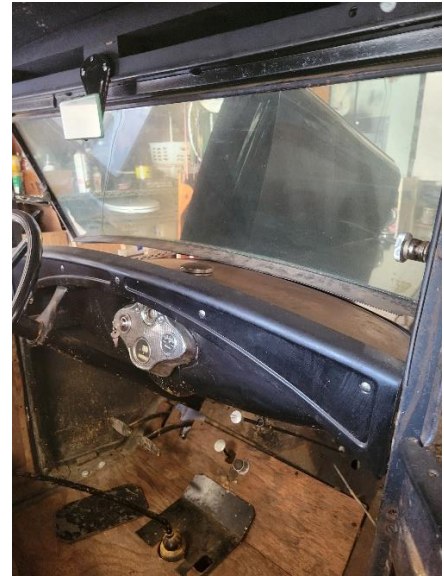


1931 Model A Wide Bed Steel Top Pickup



New clutch, new pressure plate, new pilot bearing, new ring gear, flywheel turned, distributor rebuilt, and carburetor totally rebuilt including all passages- it is an original side bowl late 31 model A. The Pickup has a Budd cab, the first American car to ever have a hardtop. It is a hard-to-find model especially with the correct wide bed. The wiring harness is new. The tail gate is a three-hinge original. There is a metal trunk inside the pickup bed and original plates. All new Firestone tires and tubes. The frame and fenders are clean enough to eat off from. The motor is fully restored. It needs paint, upholstery, and a new battery. Asking price is \$11,000.

Any questions please feel free to call me at 916-910-4369 Lou